



HF-VT343 Fire Detection Camera

Quick Start Guide

Product Information

Read all information and instructions in this document carefully before using the device and keep it for further reference.
For more device information and instructions, please visit our website at <https://www.hikvision.com>. You can also refer to other documents (if any) accompanying the device or scan the QR code (if any) on the packaging to get more information.

About this Document
• This Document includes instructions for using and managing the Product. Pictures, charts, images and all other information hereinafter are for description and explanation only.

• The information contained in the Document is subject to change, without notice, due to firmware updates or other reasons. Please find the latest version of the Document at the Hikvision website (<https://www.hikvision.com>). Unless otherwise agreed, Hangzhou Hikvision Digital Technology Co., Ltd. or its affiliates (hereinafter referred to as "Hikvision") makes no warranties, express or implied.

• Please use the Document with the guidance and assistance of professionals trained in supporting the Product.

About this Product
This product can only enjoy the after-sales service support in the country or region where the purchase is made.

Acknowledgment of Intellectual Property Rights
Hikvision owns the copyrights and/or patents related to the technology embodied in the Products described in this Document, which may include licenses obtained from third parties.

• Any part of the Document, including text, pictures, graphics, etc., belongs to Hikvision. No part of this Document may be excerpted, copied, translated, or modified in whole or in part by any means without written permission.

• HIKVISION and other Hikvision's trademarks and logos are the properties of Hikvision in various jurisdictions.

• Other trademarks and logos mentioned are the properties of their respective owners.

LEGAL DISCLAIMER
• TO THE MAXIMUM EXTENT PERMITTED BY APPLICABLE LAW THIS DOCUMENT AND THE PRODUCT DESCRIBED, WITH ITS HARDWARE, SOFTWARE AND FIRMWARE, ARE PROVIDED "AS IS" AND "WITH ALL FAULTS AND ERRORS". HIKVISION MAKES NO WARRANTIES, EXPRESS OR IMPLIED, INCLUDING WITHOUT LIMITATION, MERCHANTABILITY, SATISFACTORY QUALITY, OR FITNESS FOR A PARTICULAR PURPOSE.

THE USE OF THE PRODUCT BY YOU IS AT YOUR OWN RISK. IN NO EVENT WILL HIKVISION BE LIABLE TO YOU FOR ANY SPECIAL, CONSEQUENTIAL, INCIDENTAL, OR INDIRECT DAMAGES, INCLUDING, AMONG OTHERS, DAMAGES FOR LOSS OF BUSINESS PROFITS, BUSINESS INTERRUPTION, OR LOSS OF DATA, CORRUPTION OF SYSTEMS, OR LOSS OF DOCUMENTATION, WHETHER BASED ON BREACH OF CONTRACT, TORT (INCLUDING NEGLIGENCE), PRODUCT LIABILITY, OR OTHERWISE, IN CONNECTION WITH THE USE OF THE PRODUCT, EVEN IF HIKVISION HAS BEEN ADVISED OF THE POSSIBILITY OF SUCH DAMAGES OR LOSS.

YOU ACKNOWLEDGE THAT THE NATURE OF THE INTERNET PROVIDES FOR INHERENT SECURITY RISKS, AND HIKVISION SHALL NOT TAKE ANY RESPONSIBILITIES FOR ABNORMAL OPERATION, PRIVACY LEAKAGE OR OTHER DAMAGES RESULTING FROM CYBER-ATTACK, HACKER ATTACK, VIRUS INFECTION, OR OTHER INTERNET SECURITY RISKS. HOWEVER, HIKVISION WILL PROVIDE TIMELY TECHNICAL SUPPORT IF REQUIRED.

• YOU AGREE TO USE THIS PRODUCT IN COMPLIANCE WITH ALL APPLICABLE LAWS, AND YOU ARE SOLELY RESPONSIBLE FOR ENSURING THAT YOUR USE CONFORMS TO THE APPLICABLE LAW, ESPECIALLY YOU ARE RESPONSIBLE FOR USING THIS PRODUCT IN A MANNER THAT DOES NOT INFRINGE ON THE RIGHTS OF THIRD PARTIES, INCLUDING WITHOUT LIMITATION, RIGHTS OF PUBLICITY, INTELLECTUAL PROPERTY RIGHTS, OR DATA PROTECTION AND OTHER PRIVACY RIGHTS. YOU SHALL NOT USE THIS PRODUCT FOR ANY PROHIBITED END-USES, INCLUDING THE DEVELOPMENT OR PRODUCTION OF WEAPONS OF MASS DESTRUCTION, THE DEVELOPMENT OR PRODUCTION OF CHEMICAL OR BIOLOGICAL WEAPONS, ANY ACTIVITIES IN THE CONTEXT RELATED TO ANY NUCLEAR EXPLOSIVE OR UNSAFE NUCLEAR FUEL-CYCLE, OR IN SUPPORT OF HUMAN RIGHTS ABUSES.

• IN THE EVENT OF ANY CONFLICTS BETWEEN THIS DOCUMENT AND THE APPLICABLE LAW, THE LATTER PREVAILS.

© Hangzhou Hikvision Digital Technology Co., Ltd. All rights reserved.

CAUTION: Risk of explosion if the battery is replaced by an incorrect type.

2. Improper replacement of the battery with an incorrect type may defeat a safeguard (for example, in the case of some lithium battery types).

3. Do not dispose of the battery into fire or a hot oven, or mechanically crush or cut the battery, which may result in an explosion.

4. Do not leave the battery in an extremely high temperature surrounding environment, which may result in an explosion or the leakage of flammable liquid or gas.

5. Do not subject the battery to extremely low air pressure, which may result in an explosion or the leakage of flammable liquid or gas.

6. Dispose of used batteries according to the instructions.

English

Diagram Reference

1 Cautions

- In the use of the product, you must be in strict compliance with the electrical safety regulations of the nation and region.

- Correctly install and maintain the camera. Although camera can help save lives by providing an early warning of a fire, they are not a substitute for an insurance policy. Home owners should have adequate insurance to protect their lives and properties.

- The camera is only suitable for safe use in areas below 2000 m above sea level and under non tropical conditions.

- The camera has multiple power supplies. Please disconnect all power supplies during maintenance.

- According to relevant national standards, when supplying power to weak current equipment, the power supply current shall not exceed 8 A and the power shall not exceed 100 W to prevent safety accidents.

- If it is necessary to use it in special environment (such as peak, iron tower, forest, etc.), please add lightning arrester at the equipment inlet.

- Do not aim the lens at strong light (such as light illumination, sunlight or laser beam, etc.), otherwise the image sensor will be damaged.

- Do not touch the image sensor directly. If it is necessary to clean it, please slightly wet the soft and clean cloth with alcohol and gently wipe away the dust; When the product is not used, please add the dust cover to protect the image sensor.

- To ensure the normal detection of the camera, do not use hair spray, insecticide, diluent and other substances that can produce colloidal suspension near the alarm.

- No naked flame sources, such as lighted candles, should be placed on the equipment.

- The product is a camera, which can send out audible and visual alarm signals in the event of fire, but cannot extinguish fire.

- Do not be at high volume for a long time near to the ears to prevent hearing impairment.

- Keep the packing so that in case of any problem, pack the alarm in its original packing and send it to the agent or return it to the factory for disposal.

- If the camera does not work properly, contact the dealer or the nearest service center. Never attempt to disassemble the camera yourself. (We shall not assume any responsibility for problems caused by unauthorized repair or maintenance.)

- The product is a camera, which can send out audible and visual alarm signals in the event of fire, but cannot extinguish fire.

- Do not be at high volume for a long time near to the ears to prevent hearing impairment.

- Keep the packing so that in case of any problem, pack the alarm in its original packing and send it to the agent or return it to the factory for disposal.

- If the camera does not work properly, contact the dealer or the nearest service center. Never attempt to disassemble the camera yourself. (We shall not assume any responsibility for problems caused by unauthorized repair or maintenance.)

- The product is a camera, which can send out audible and visual alarm signals in the event of fire, but cannot extinguish fire.

- Do not be at high volume for a long time near to the ears to prevent hearing impairment.

- Keep the packing so that in case of any problem, pack the alarm in its original packing and send it to the agent or return it to the factory for disposal.

- If the camera does not work properly, contact the dealer or the nearest service center. Never attempt to disassemble the camera yourself. (We shall not assume any responsibility for problems caused by unauthorized repair or maintenance.)

- The product is a camera, which can send out audible and visual alarm signals in the event of fire, but cannot extinguish fire.

- Do not be at high volume for a long time near to the ears to prevent hearing impairment.

- Keep the packing so that in case of any problem, pack the alarm in its original packing and send it to the agent or return it to the factory for disposal.

- If the camera does not work properly, contact the dealer or the nearest service center. Never attempt to disassemble the camera yourself. (We shall not assume any responsibility for problems caused by unauthorized repair or maintenance.)

- The product is a camera, which can send out audible and visual alarm signals in the event of fire, but cannot extinguish fire.

- Do not be at high volume for a long time near to the ears to prevent hearing impairment.

- Keep the packing so that in case of any problem, pack the alarm in its original packing and send it to the agent or return it to the factory for disposal.

- If the camera does not work properly, contact the dealer or the nearest service center. Never attempt to disassemble the camera yourself. (We shall not assume any responsibility for problems caused by unauthorized repair or maintenance.)

- The product is a camera, which can send out audible and visual alarm signals in the event of fire, but cannot extinguish fire.

- Do not be at high volume for a long time near to the ears to prevent hearing impairment.

- Keep the packing so that in case of any problem, pack the alarm in its original packing and send it to the agent or return it to the factory for disposal.

- If the camera does not work properly, contact the dealer or the nearest service center. Never attempt to disassemble the camera yourself. (We shall not assume any responsibility for problems caused by unauthorized repair or maintenance.)

- The product is a camera, which can send out audible and visual alarm signals in the event of fire, but cannot extinguish fire.

- Do not be at high volume for a long time near to the ears to prevent hearing impairment.

- Keep the packing so that in case of any problem, pack the alarm in its original packing and send it to the agent or return it to the factory for disposal.

- If the camera does not work properly, contact the dealer or the nearest service center. Never attempt to disassemble the camera yourself. (We shall not assume any responsibility for problems caused by unauthorized repair or maintenance.)

- The product is a camera, which can send out audible and visual alarm signals in the event of fire, but cannot extinguish fire.

- Do not be at high volume for a long time near to the ears to prevent hearing impairment.

- Keep the packing so that in case of any problem, pack the alarm in its original packing and send it to the agent or return it to the factory for disposal.

- If the camera does not work properly, contact the dealer or the nearest service center. Never attempt to disassemble the camera yourself. (We shall not assume any responsibility for problems caused by unauthorized repair or maintenance.)

- The product is a camera, which can send out audible and visual alarm signals in the event of fire, but cannot extinguish fire.

- Do not be at high volume for a long time near to the ears to prevent hearing impairment.

- Keep the packing so that in case of any problem, pack the alarm in its original packing and send it to the agent or return it to the factory for disposal.

- If the camera does not work properly, contact the dealer or the nearest service center. Never attempt to disassemble the camera yourself. (We shall not assume any responsibility for problems caused by unauthorized repair or maintenance.)

- The product is a camera, which can send out audible and visual alarm signals in the event of fire, but cannot extinguish fire.

- Do not be at high volume for a long time near to the ears to prevent hearing impairment.

- Keep the packing so that in case of any problem, pack the alarm in its original packing and send it to the agent or return it to the factory for disposal.

- If the camera does not work properly, contact the dealer or the nearest service center. Never attempt to disassemble the camera yourself. (We shall not assume any responsibility for problems caused by unauthorized repair or maintenance.)

- The product is a camera, which can send out audible and visual alarm signals in the event of fire, but cannot extinguish fire.

- Do not be at high volume for a long time near to the ears to prevent hearing impairment.

- Keep the packing so that in case of any problem, pack the alarm in its original packing and send it to the agent or return it to the factory for disposal.

- If the camera does not work properly, contact the dealer or the nearest service center. Never attempt to disassemble the camera yourself. (We shall not assume any responsibility for problems caused by unauthorized repair or maintenance.)

- The product is a camera, which can send out audible and visual alarm signals in the event of fire, but cannot extinguish fire.

- Do not be at high volume for a long time near to the ears to prevent hearing impairment.

- Keep the packing so that in case of any problem, pack the alarm in its original packing and send it to the agent or return it to the factory for disposal.

- If the camera does not work properly, contact the dealer or the nearest service center. Never attempt to disassemble the camera yourself. (We shall not assume any responsibility for problems caused by unauthorized repair or maintenance.)

- The product is a camera, which can send out audible and visual alarm signals in the event of fire, but cannot extinguish fire.

- Do not be at high volume for a long time near to the ears to prevent hearing impairment.

- Keep the packing so that in case of any problem, pack the alarm in its original packing and send it to the agent or return it to the factory for disposal.

- If the camera does not work properly, contact the dealer or the nearest service center. Never attempt to disassemble the camera yourself. (We shall not assume any responsibility for problems caused by unauthorized repair or maintenance.)

- The product is a camera, which can send out audible and visual alarm signals in the event of fire, but cannot extinguish fire.

- Do not be at high volume for a long time near to the ears to prevent hearing impairment.

- Keep the packing so that in case of any problem, pack the alarm in its original packing and send it to the agent or return it to the factory for disposal.

- If the camera does not work properly, contact the dealer or the nearest service center. Never attempt to disassemble the camera yourself. (We shall not assume any responsibility for problems caused by unauthorized repair or maintenance.)

- The product is a camera, which can send out audible and visual alarm signals in the event of fire, but cannot extinguish fire.

- Do not be at high volume for a long time near to the ears to prevent hearing impairment.

- Keep the packing so that in case of any problem, pack the alarm in its original packing and send it to the agent or return it to the factory for disposal.

- If the camera does not work properly, contact the dealer or the nearest service center. Never attempt to disassemble the camera yourself. (We shall not assume any responsibility for problems caused by unauthorized repair or maintenance.)

- The product is a camera, which can send out audible and visual alarm signals in the event of fire, but cannot extinguish fire.

- Do not be at high volume for a long time near to the ears to prevent hearing impairment.

- Keep the packing so that in case of any problem, pack the alarm in its original packing and send it to the agent or return it to the factory for disposal.

- If the camera does not work properly, contact the dealer or the nearest service center. Never attempt to disassemble the camera yourself. (We shall not assume any responsibility for problems caused by unauthorized repair or maintenance.)

- The product is a camera, which can send out audible and visual alarm signals in the event of fire, but cannot extinguish fire.

- Do not be at high volume for a long time near to the ears to prevent hearing impairment.

- Keep the packing so that in case of any problem, pack the alarm in its original packing and send it to the agent or return it to the factory for disposal.

- If the camera does not work properly, contact the dealer or the nearest service center. Never attempt to disassemble the camera yourself. (We shall not assume any responsibility for problems caused by unauthorized repair or maintenance.)

- The product is a camera, which can send out audible and visual alarm signals in the event of fire, but cannot extinguish fire.

- Do not be at high volume for a long time near to the ears to prevent hearing impairment.

- Keep the packing so that in case of any problem, pack the alarm in its original packing and send it to the agent or return it to the factory for disposal.

- If the camera does not work properly, contact the dealer or the nearest service center. Never attempt to disassemble the camera yourself. (We shall not assume any responsibility for problems caused by unauthorized repair or maintenance.)

- The product is a camera, which can send out audible and visual alarm signals in the event of fire, but cannot extinguish fire.

- Do not be at high volume for a long time near to the ears to prevent hearing impairment.

- Keep the packing so that in case of any problem, pack the alarm in its original packing and send it to the agent or return it to the factory for disposal.

- If the camera does not work properly, contact the dealer or the nearest service center. Never attempt to disassemble the camera yourself. (We shall not assume any responsibility for problems caused by unauthorized repair or maintenance.)

- The product is a camera, which can send out audible and visual alarm signals in the event of fire, but cannot extinguish fire.

- Do not be at high volume for a long time near to the ears to prevent hearing impairment.

- Keep the packing so that in case of any problem, pack the alarm in its original packing and send it to the agent or return it to the factory for disposal.

- If the camera does not work properly, contact the dealer or the nearest service center. Never attempt to disassemble the camera yourself. (We shall not assume any responsibility for problems caused by unauthorized repair or maintenance.)

- The product is a camera, which can send out audible and visual alarm signals in the event of fire, but cannot extinguish fire.

- Do not be at high volume for a long time near to the ears to prevent hearing impairment.

- Keep the packing so that in case of any problem, pack the alarm in its original packing and send it to the agent or return it to the factory for disposal.

- If the camera does not work properly, contact the dealer or the nearest service center. Never attempt to disassemble the camera yourself. (We shall not assume any responsibility for problems caused by unauthorized repair or maintenance.)

- The product is a camera, which can send out audible and visual alarm signals in the event of fire, but cannot extinguish fire.

- Do not be at high volume for a long time near to the ears to prevent hearing impairment.

- Keep the packing so that in case of any problem, pack the alarm in its original packing and send it to the agent or return it to the factory for disposal.

- If the camera does not work properly, contact the dealer or the nearest service center. Never attempt to disassemble the camera yourself. (We shall not assume any responsibility for problems caused by unauthorized repair or maintenance.)

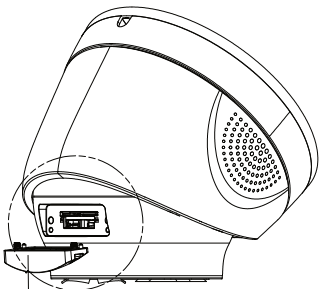
- The product is a camera, which can send out audible and visual alarm signals in the event of fire, but cannot extinguish fire.

- Do not be at high volume for a long time near to the ears to prevent hearing impairment.

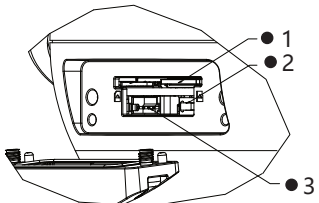
- Keep the packing so that in case of any problem, pack the alarm in its original packing and send it to the agent or return it to the factory for disposal.

- If the camera does not work properly, contact the dealer or the nearest service center. Never attempt to disassemble the camera yourself. (We shall not assume any responsibility for problems caused by unauthorized repair or maintenance.)

SD Card Interface



View Details A



Details A

1. Micro SD Card
2. Reset Button
3. Debug UART

Indicator

Indicator	Status
Red/ Blue light on	Alarm (Red or blue light selectable)
Yellow light on	Fault
Green light on	Normal

Installation

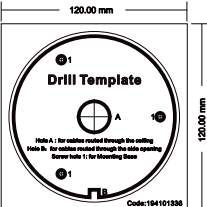
Installation Notification

- Install the camera according to the instructions in this guide.
- To prevent injury, the camera must be securely attached to the floor/wall in accordance with the installed instructions.
- Before installation, confirm that the camera and other mounting parts in the box are in good condition.
- Do not install the camera in new or renovated buildings until all work is completed. The installation wall shall be able to bear at least 4 times the total weight of the camera and installation accessories.
- Install multiple alarms if the installation location (such as ceiling) is longer than 32.81 ft (10 meters).
- For bracket installation, please pay attention to the bearing indications on the mounting bracket.
- If it is installed on the cement wall, first install the expansion bolt and then install the bracket. If on the wooden wall, directly install bracket with tapping screws.
- Please install the waterproof tape and the mesh waterproof package according to the specifications. For the specific installation method, please refer to the user manual.
- When moving the camera, do not directly pull the cable at the tail of the camera, or it may affect the waterproof performance or cause wiring problems.

Installing Device

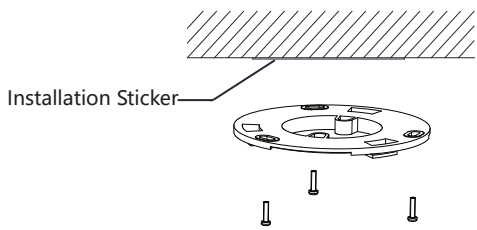
The camera can be installed using ceiling mounted, wall mounted, lifting mounted, and inclined base mounted. DS-1273ZJ-130-TTL wall mounted bracket is recommended for wall mounted, DS-1271ZJ-130-TTL lifting bracket is recommended for lifting mounted. Taking ceiling mounted installation as an example for explanation.

- 1 Take out the installation sticker that comes with device, stick the sticker onto the wall of the camera that needs to be installed, and drill holes according to the holes marked on the sticker.

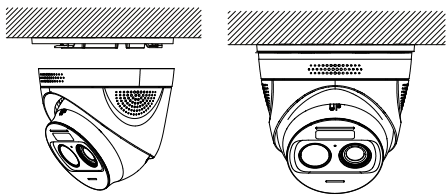


(Unit: mm)

- 2 Fix the plastic base on the wall with three PA4 × 25 screws.



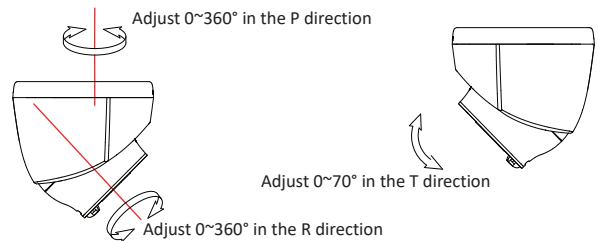
- 3 Arrange and connect the power and network cables of the camera, and ensure electronic insulation.
- 4 Aim the camera at the plastic base, tighten it in the indicated direction.



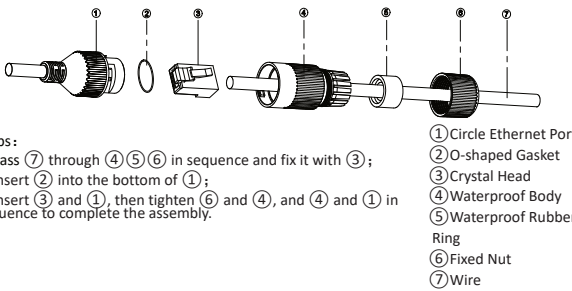
Note: After installing, the UP logo on the sphere needs to be upwards.

Adjusting Camera Angle

Compare the video images on the preview screen, adjust the device angle by rotating the fixed cover and the sphere, and adjust the screen to the desired to follow scene.

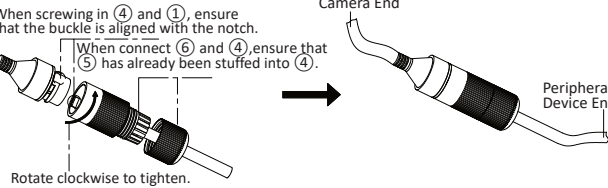


Installation of Waterproof Accessories for Ethernet Ports



- Steps:
1. Pass ⑦ through ④⑤⑥ in sequence and fix it with ③;
 2. Insert ② into the bottom of ①;
 3. Insert ③ and ①, then tighten ⑥ and ④, and ④ and ① in sequence to complete the assembly.

- ① Circle Ethernet Port
- ② O-shaped Gasket
- ③ Crystal Head
- ④ Waterproof Body
- ⑤ Waterproof Rubber Ring
- ⑥ Fixed Nut
- ⑦ Wire



Network Configuration

Connecting Network

Connect to Ethernet using a network cable. After connecting to the network, you can log in to the browser to configure device functions and parameters.

Initializing Device

When the device is first powered on and used, it must be activated before it can be used normally.
Original IP address: 192.168.1.64
The device can be activated through SADP software, client software and browser. Taking initializing device through browser as an example for explanation.

Steps:

- 1 Connect the computer and device directly with a network cable.
- 2 Modify the computer IP and device IP to be in the same network segment.
- 3 Enter 192.168.1.64 in the browser to enter the activation page. And create activation password in the page.

- 4 Click OK and initialize the device.

- 5 Enter activation password, go to **Configuration - Network - Basic Configuration - TCP/IP**, modify device IP address to make it and current network be in the same network segment.

Specifications

Camera	
Sensor Type	1/3" Progressive Scan CMOS
Max. Resolution	2688×1520
Main Stream	50Hz: 25 fps (2560 × 1440, 1920 × 1080, 1280 × 720) 60Hz: 30 fps (2560 × 1440, 1920 × 1080, 1280 × 720)
Sub Stream	50Hz: 25 fps (704 × 576, 640 × 480, 352 × 288) 60Hz: 30 fps (704 × 480, 640 × 480, 352 × 240)
Min. Illumination	Color : 0.01 Lux @ (F1.6, AGC ON)
Lens	Horizontal: 83°, Vertical: 43°, Diagonal: 100°
Image Settings	Saturation, brightness, contrast, sharpness, AGC and white balance can be adjusted through the client or browser.
WDR	WDR
Shutter	1/25 ~ 1/100,000 s
Image Enhancement	BLC, 3D DNR
Main Stream Video Compression Standard	H.265, H.264
Sub Stream Compression Standard	H.265, H.264
Video Bitrate	256Kbps ~ 8192Kbps
Intelligent Alarm	Intrusion detection, line crossing detection, smoke and flame detection, Fire and Smoke Detection, Indoor Access Blocked Detection, On/Off Duty Detection, Detection of Dangerous Goods in Elevator, Dangerous
Protocol	TCP/IP, HTTP, HTTPS, DHCP, DNS, RTP, RTSP, RTCP, NTP, IPv4, UDP
Interface Protocol	ONVIF (PROFILE S, PROFILE G), ISAPI, EZVIZ, ISUP
General	Anti flicker, heartbeat, image, password protection,
Storage	Micro SD/SDHC/SDXC card (256 G) disconnection local storage
Exception Detection	Motion Detection, video tampering alarm, network cable disconnection, IP address conflict, invalid access, full memory, memory error
WEB Configuration	Support web preview, configuration and parameter
IR Range	White: 10 m IR: 30m
Accessory Type	Wall mounted support, pendent support, universal joint
Detector	
Image Sensor	Vanadium Oxide (VOX) Microbolometer
Pixel Size	HF-VT343(1mm)(O-STD):17 μm HF-VT343(3mm)(O-STD):12 μm
Response Waveband	8~14 μm
Focal Length of Thermal Imaging Lens	HF-VT343(1mm)(O-STD):1.2 mm HF-VT343(3mm)(O-STD):3.2 mm
Thermal Imaging Field of View	HF-VT343(1mm)(O-STD):90°×68° HF-VT343(3mm)(O-STD):56.2°×42.2°
Palette Mode	Support 15 modes including white hot, black hot, fusion 1, rainbow, fusion 2, iron red 1, iron red 2, etc.
Fire and Smoke Detection	Yes
Temperature Exception Detection	Yes
Temperature Measurement Range	HF-VT343(3mm)(O-STD):-20℃~550℃ HF-VT343(1mm)(O-STD):-20℃~400℃
Thermography Precision	HF-VT343(3mm)(O-STD):Max (±8℃, ±8%), within the range of 0.4 ~ 2.5 m from the device HF-VT343(1mm)(O-STD):Max (±8℃, ±8%), within the range of 0.5 ~ 1.2 m from the device
Noise Equivalent Temperature Difference (NETD)	≤50 mK (@25℃, F1.0)
Temperature Sensing Mode	Support non-contact temperature sensing
High Temperature Alarm	Yes
Interface	
Alarm Interface	2 way alarm input (Alarm in), 2 way alarm output (Alarm out